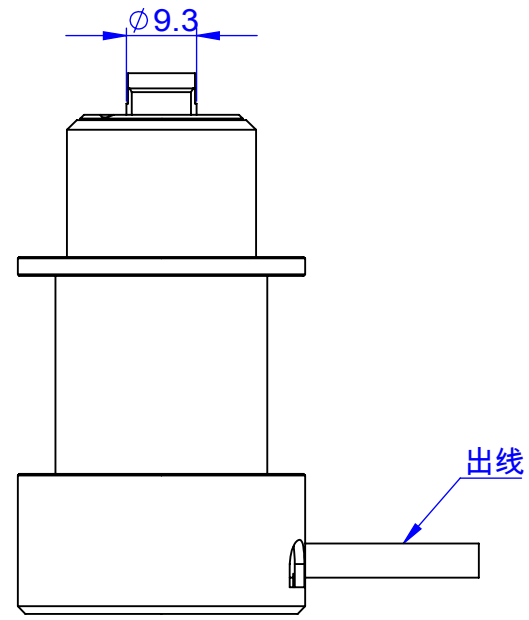
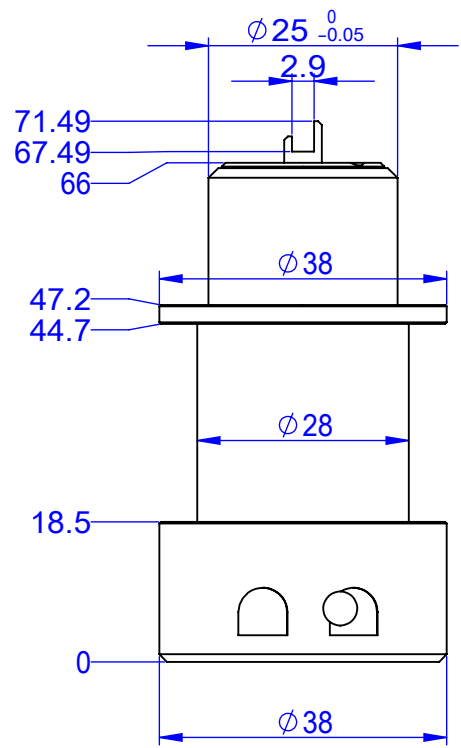


更改	日期	说明	修改人	审核

其余: $\frac{3.2}{\nabla}$



THESE DRAWING AND SPECIFICATION ARE THE PROPERTY OF Pro-Tech LTD.
USED IN ANY MANNER WITHOUT THE PRIOR WRITTEN CONSENT OF Pro-Tech LTD.

Pro-Tech LTD.

Requirement of Green Part:
1. Comply with ROHS "Green Product Chemical Substances Specification"
2. Follow customer's specification if required.

ANGULAR DIMENSIONS	TOLERANCE(+/-)			
	0-6	6-30	30-80	80-180
✓	0.05	0.1	0.2	0.3
	0.1	0.2	0.3	0.4
	0.15	0.3	0.4	0.5
	0.2	0.4	0.5	0.7
	0.3	0.5	0.7	0.9

MATERIAL 材质 材质 <未指定>
FINISH 处理
QTY. 数量
SCALE 比例 1:1

APPD. 审核
图号
DR 制图
2021-09-01

TITLE 名称	14电机	
DWG NO. 编号		
USED 用途		REV 更改
SHEET 张	1/1	UNIT 单位 mm